

THIS IS A *REVISED FILE
*REVISED FILES REQUIRE A "DISPOSITION APPROVAL" SIGNATURE. UNI-LABEL & TAG CAN NOT RELEASE THE "APPROVED" "REVISED" ART WITH OUT THIS SIGNATURE.

▲ PULL SLOWLY TO OPEN

MGP

NDC 60432-622-16

METOCLOPRAMIDE
ORAL SOLUTION, USP

5 mg/5 mL

Alcohol less than 0.1%

PHARMACIST: PLEASE DISPENSE
WITH MEDICATION GUIDE.

DO NOT USE IF INNER FOIL SEAL PRINTED "SEALED FOR YOUR PROTECTION" IS BROKEN OR MISSING.

Rx Only

NET: 1 Pint (473 mL)

MGP

NDC 60432-622-16

METOCLOPRAMIDE
ORAL SOLUTION, USP

5 mg/5 mL

Alcohol less than 0.1%

PHARMACIST: PLEASE DISPENSE
WITH MEDICATION GUIDE.

DO NOT USE IF INNER FOIL SEAL PRINTED "SEALED FOR YOUR PROTECTION" IS BROKEN OR MISSING.

Rx Only

NET: 1 Pint (473 mL)

FPO--Imprint Area--FPO

Each 5 mL (teaspoonful) contains:
Metoclopramide USP 5 mg
(present as the hydrochloride)

Alcohol less than 0.1%
(contributed by flavorings)

In an orange-colored, palatable, aromatic, sugar-free vehicle.

USUAL DOSAGE: See accompanying insert.

WARNINGS: KEEP THIS AND ALL DRUGS OUT OF THE REACH OF CHILDREN. In case of accidental overdose, seek professional assistance or contact a Poison Control Center immediately.

Store at controlled room temperature, between 20 °C and 25 °C (68 °F to 77 °F) (see USP).

Protect from freezing.

Dispense in a tight, light-resistant container as defined in the USP, with child-resistant closure.

Manufactured For: Wockhardt USA, LLC
Parsippany, NJ 07054

Manufactured By: Morton Grove Pharmaceuticals, Inc.
Morton Grove, IL 60053
A50-7622-16
REV. 07-09

3 60432-622-16 5

MGP PROOFING

Signature 1 _____ Date _____

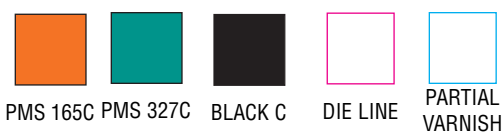
Signature 2 _____ Date _____

MAKE CHANGES; SEND NEW PROOFS

OK TO PRINT
APPROVED BY _____
(Signature Required)

DATE _____

This color proof or PDF is a representation of the colors and will not reflect the final press output.



DISPOSITION

It is important that OLD computer files/disks, art, plates and negs be destroyed to avoid production of obsolete items. Please approve the above procedure when approving the revised art.

DISPOSITION APPROVED BY _____

DATE _____

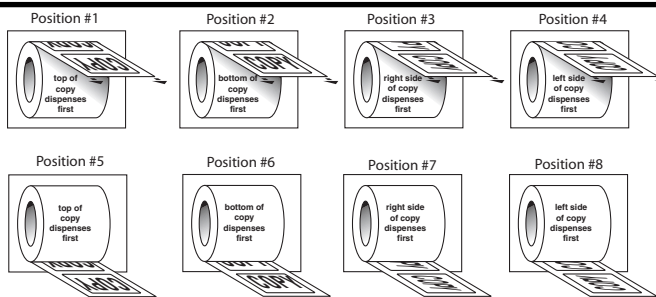
100% PROOF

Customer: MGP
SIZE: 3.75" x 6.875" x 2.187"

Job No.:
Part No.: A50-7622-16
DIE NO.: D10-344

Operator: Pete
Description: METOCLOPRAMIDE ORAL SOLUTION
Rev. 07-09

PROOF DOCUMENTATION		
	DATE	DESCRIPTION OF REVISION REQUIRED
Proof A	3/13/09	Revise existing art to make new rev.(PC 1 hour)
Proof B	3/18/09	Changes per marked up pdf. (PC 30 min.)
Proof C	3/19/09	Changes per marked up pdf. (PC 45 min.)
Proof D	3/19/09	Change Pharm. Text.
Proof E	5/08/09	Changes per marked up pdf.
Proof F	7/07/09	Changes per marked up pdf.
Proof G		



***Direction Off must be circled! Uni-Label & Tag can NOT release art for production with out "Direction Off" circled.**

Did you check?

- Verbiage Spelling Layout Part Number Colors Varnish Area Size Barcode

By signing this, you agree that you have verified that the verbiage, spelling, part number, layout, *direction off and printing specifications listed on this proof are correct.

APPROVED BY: _____ DATE _____



1121 Pagni Drive
Elk Grove Village, IL 60007
www.unilabel.com

P: (847) 956-8900
F: (847) 956-9504
e-mail: Pete@unilabel.com

Verbiage

Spelling

Layout

Part Number

Colors

Varnish Area

Size

Barcode

Did you check?

MGP

NDC 60432-622-16

**METOCLOPRAMIDE
ORAL SOLUTION, USP**
5 mg/5 mL

Alcohol less than 0.1%

**PHARMACIST: PLEASE DISPENSE
WITH MEDICATION GUIDE.**

DO NOT USE IF INNER FOIL SEAL PRINTED "SEALED FOR YOUR PROTECTION" IS BROKEN OR MISSING.

Rx Only

NET: 1 Pint (473 mL)

Face

metoclopramide, whereas the rate and/or extent of absorption of drugs from the small bowel may be increased (e.g., acetaminophen, tetracycline, levodopa, ethanol, cyclosporine).

Gastroparesis (gastric stasis) may be responsible for poor diabetic control in some patients. Exogenously administered insulin may begin to act before food has left the stomach and lead to hypoglycemia. Because the action of metoclopramide will influence the delivery of food to intestines and thus the rate of absorption, insulin dosage or timing of dosage may require adjustment.

Carcinogenesis, Mutagenesis, Impairment of Fertility
A 77-week study was conducted in rats with oral doses up to about 40 times the maximum recommended human daily dose. Metoclopramide elevates prolactin levels and the elevation persists during chronic administration. Tissue culture experiments indicate that approximately one-third of human breast cancers are prolactin-dependent *in vitro*, a factor of potential importance if the prescription of metoclopramide is contemplated in a patient with previously detected breast cancer. Although disturbances such as galactorrhea, amenorrhea, gynecostasia, and impotence have been reported with prolactin-elevating drugs, the clinical significance of elevated serum prolactin levels is unknown for most patients. An increase in mammary neoplasms has been found in rodents after chronic administration of prolactin-stimulating neuroleptic drugs and metoclopramide. Neither clinical studies nor epidemiologic studies conducted to date, however, have shown an association between chronic administration of these drugs and mammary tumorigenesis; the available evidence is too limited to be conclusive at this time.

An Ames mutagenicity test performed on metoclopramide was negative.

Pregnancy Category B
Reproduction studies performed in rats, mice, and rabbits by the I.V., I.M., S.C., and oral routes at maximum levels ranging from 120 to 250 times the human dose have demonstrated no impairment of fertility or significant harm to the fetus due to metoclopramide. There are, however, no adequate and well-controlled studies in pregnant women. Because animal reproduction studies are not always predictive of human response, this drug should be used during pregnancy only if clearly needed.

Nursing Mothers
Metoclopramide is excreted in human milk. Caution should be exercised when metoclopramide is administered to a nursing mother.

Pediatric Use
Safety and effectiveness in pediatric patients have not been established (see **OVERDOSAGE**).

Care should be exercised in administering metoclopramide to neonates since prolonged clearance may produce excessive serum concentrations (see **CLINICAL PHARMACOLOGY-Pharmacokinetics**). In addition,

neonates have reduced levels of NADH-cytochrome b₅ reductase, which, in combination with the aforementioned pharmacokinetic factors, make neonates more susceptible to methemoglobinemia (see **OVERDOSAGE**).

The safety profile of metoclopramide in adults cannot be extrapolated to pediatric patients. Dystonias and other extrapyramidal reactions associated with metoclopramide are more common in the pediatric population than in adults. (See **WARNINGS** and **ADVERSE REACTIONS-Extrapyramidal Reactions**.)

Geriatric Use
Clinical studies of metoclopramide did not include sufficient numbers of subjects aged 65 and over to determine whether elderly subjects respond differently from younger subjects.

The risk of developing parkinsonian-like side effects increases with ascending dose. Geriatric patients should receive the lowest dose of metoclopramide that is effective. If parkinsonian-like symptoms develop in a geriatric patient receiving metoclopramide, metoclopramide should generally be discontinued before initiating any specific antiparkinsonian agents (see **WARNINGS** and **DOSAGE AND ADMINISTRATION - For the Relief of Symptomatic Gastroesophageal Reflux**).

The elderly may be at greater risk for tardive dyskinesia (see **WARNINGS - Tardive Dyskinesia**).

Sedation has been reported in metoclopramide users. Sedation may cause confusion and manifest as over-sedation in the elderly (see **CLINICAL PHARMACOLOGY, PRECAUTIONS - information for patients and ADVERSE REACTIONS - CNS Effects**).

Metoclopramide is known to be substantially excreted by the kidney, and the risk of toxic reactions to this drug may be greater in patients with impaired renal function (see **DOSAGE AND ADMINISTRATION-USE IN PATIENTS WITH RENAL OR HEPATIC IMPAIRMENT**).

For these reasons, dose selection for an elderly patient should be cautious, usually starting at the low end of the dosing range, reflecting the greater frequency of decreased renal functions, concomitant disease, or other drug therapy in the elderly (see **DOSAGE AND ADMINISTRATION - For the Relief of Symptomatic Gastroesophageal Reflux** and **USE IN PATIENTS WITH RENAL OR HEPATIC IMPAIRMENT**).

Other Special Populations
Patients with NADH-cytochrome b₅ reductase deficiency are at an increased risk of developing methemoglobinemia and/or sulfhemoglobinemia when metoclopramide is administered. In patients with G6PD deficiency who experience metoclopramide-induced methemoglobinemia, methylene blue treatment is not recommended (see **OVERDOSAGE**).

Cardiovascular
Hypotension, hypertension, supraventricular tachycardia, bradycardia, fluid

ADVERSE REACTIONS

In general, the incidence of adverse reactions correlates with the dose and duration of metoclopramide administration. The following reactions have been reported, although in most instances, data do not permit an estimate of frequency:

CNS Effects
Restlessness, drowsiness, fatigue, and lassitude occur in approximately 10% of patients receiving the most commonly prescribed dosage of 10 mg q.i.d. (see **PRECAUTIONS**). Insomnia, headache, confusion, dizziness, or mental depression with suicidal ideation (see **WARNINGS**) occur less frequently. The incidence of drowsiness is greater at higher doses. There are isolated reports of convulsive seizures without clearcut relationship to metoclopramide. Rarely, hallucinations have been reported.

Extrapyramidal Reactions (EPS)
Acute dystonic reactions, the most common type of EPS associated with metoclopramide, occur in approximately 0.2% of patients (1 in 500) treated with 30 to 40 mg of metoclopramide per day.

Symptoms include involuntary movements of limbs, facial grimacing, torticollis, oculogyric crisis, rhythmic protrusion of tongue, bulbar type of speech, trismus, opisthotonus (tetanus-like reactions) and rarely, stridor and dyspnea possibly due to laryngospasm; ordinarily these symptoms are readily reversed by diphenhydramine (see **WARNINGS**).

Parkinsonian-like symptoms may include bradykinesia, tremor, cogwheel rigidity, mask-like facies (see **WARNINGS**).

Tardive dyskinesia most frequently is characterized by involuntary movements of the tongue, face, mouth or jaw, and sometimes by involuntary movements of the trunk and/or extremities; movements may be choreoathetotic in appearance (see **WARNINGS**).

Motor restlessness (akathisia) may consist of feelings of anxiety, agitation, jitteriness, and insomnia, as well as inability to sit still, pacing, foot tapping. These symptoms may disappear spontaneously or respond to a reduction in dosage.

Neuroleptic Malignant Syndrome
Rare occurrences of neuroleptic malignant syndrome (NMS) have been reported. This potentially fatal syndrome is comprised of the symptom complex of hyperthermia, altered consciousness, muscular rigidity, and autonomic dysfunction (see **WARNINGS**).

Endocrine Disturbances
Galactorrhea, amenorrhea, gynecostasia, impotence secondary to hyperprolactinemia (see **PRECAUTIONS**). Fluid retention secondary to transient elevation of aldosterone (see **CLINICAL PHARMACOLOGY**).

Cardiovascular
Hypotension, hypertension, supraventricular tachycardia, bradycardia, fluid

retention, acute congestive heart failure, and possible AV block (see **CONTRAINDICATIONS** and **PRECAUTIONS**).

Gastrointestinal
Nausea and bowel disturbances, primarily diarrhea.

Hepatic
Rarely, cases of hepatotoxicity, characterized by such findings as jaundice and altered liver function tests, when metoclopramide was administered with other drugs with known hepatotoxic potential.

Renal
Urinary frequency and incontinence.

Hematologic
A few cases of neutropenia, leukopenia, or agranulocytosis, generally without clearcut relationship to metoclopramide. Methemoglobinemia, in adults and especially with overdosage in neonates (see **OVERDOSAGE**). Sulfhemoglobinemia in adults.

Allergic Reactions
A few cases of rash, urticaria, or bronchospasm, especially in patients with a history of asthma. Rarely angioneurotic edema, including glossal or laryngeal edema.

Miscellaneous
Visual disturbances. Porphyria.

OVERDOSAGE
Symptoms of overdosage may include drowsiness, disorientation and extrapyramidal reactions. Anticholinergic or antiparkinson drugs or antihistamines with anticholinergic properties may be helpful in controlling the extrapyramidal reactions. Symptoms are self-limiting and usually disappear within 24 hours.

Hemodialysis removes relatively little metoclopramide, probably because of the small amount of the drug in blood relative to tissues. Similarly, continuous ambulatory peritoneal dialysis does not remove significant amounts of drug. It is unlikely that dosage would need to be adjusted to compensate for losses through dialysis. Dialysis is not likely to be an effective method of drug removal in overdose situations.

Unintentional overdose due to misadministration has been reported in infants and children with the use of metoclopramide oral solution. While there was no consistent pattern to the reports associated with these overdoses, events included seizures, extrapyramidal reactions, and lethargy.

Methemoglobinemia has occurred in premature and full-term neonates who were given overdoses of metoclopramide (1 to 4 mg/kg/day orally, intramuscularly or intravenously for 1 to 3 or more days). Methemoglobinemia can be reversed by the intravenous administration of methylene blue. However, methylene blue may cause hemolytic anemia in patients with G6PD defi-

ciency, which may be fatal (see **PRECAUTIONS - Other Special Populations**).

DOSAGE AND ADMINISTRATION
Therapy with metoclopramide oral solution should not exceed 12 weeks in duration.

For the Relief of Symptomatic Gastroesophageal Reflux
Administer from 10 mg to 15 mg metoclopramide orally up to q.i.d. 30 minutes before each meal and at bedtime, depending upon symptoms being treated and clinical response (see **CLINICAL PHARMACOLOGY** and **INDICATIONS AND USAGE**). If symptoms occur only intermittently or at specific times of the day, use of metoclopramide in single doses up to 20 mg prior to the provoking situation may be preferred rather than continuous treatment. Occasionally, patients (such as elderly patients) who are more sensitive to the therapeutic or adverse effects of metoclopramide will require only 5 mg per dose.

Experience with esophageal erosions and ulcerations is limited, but healing has thus far been documented in one controlled trial using q.i.d. therapy at 15 mg/dose, and this regimen should be used when lesions are present, so long as it is tolerated (see **ADVERSE REACTIONS**). Because of the poor correlation between symptoms and endoscopic appearance of the esophagus, therapy directed at esophageal lesions is best guided by endoscopic evaluation.

Therapy longer than 12 weeks has not been evaluated and cannot be recommended.

For the Relief of Symptoms Associated with Diabetic Gastroparesis (diabetic gastric stasis)
Administer 10 mg of metoclopramide 30 minutes before each meal and at bedtime for two to eight weeks, depending upon response and the likelihood of continued well-being upon drug discontinuation.

The initial route of administration should be determined by the severity of the presenting symptoms. If only the earliest manifestations of diabetic gastric stasis are present, oral administration of metoclopramide may be initiated. However, if severe symptoms are present, therapy should begin with metoclopramide injection (consult labeling of the injection prior to initiating parenteral administration).

Administration of metoclopramide injection up to 10 days may be required before symptoms subside, at which time oral administration may be instituted. Since diabetic gastric stasis is frequently recurrent, metoclopramide therapy should be reinstituted at the earliest manifestation.

USE IN PATIENTS WITH RENAL OR HEPATIC IMPAIRMENT
Since metoclopramide is excreted principally through the kidneys, in those patients whose creatinine clearance is below 40 mL/min, therapy should be initiated at approximately one-half the recommended dosage. Depending

upon clinical efficacy and safety considerations, the dosage may be increased or decreased as appropriate.

See **OVERDOSAGE** section for information regarding dialysis. Metoclopramide undergoes minimal hepatic metabolism, except for simple conjugation. Its safe use has been described in patients with advanced liver disease whose renal function was normal.

HOW SUPPLIED
Metoclopramide Oral Solution, USP 5 mg/5 mL (contains Metoclopramide, USP present as the hydrochloride) is supplied as an orange-colored, palatable, aromatic, sugar-free liquid for oral administration and is available in the following sizes:
Pint (473 mL)

RECOMMENDED STORAGE
Store at controlled room temperature, between 20 °C and 25 °C (68 ° to 77 °F) (see USP).

Protect from freezing. Dispense in a tight, light-resistant container as defined in the USP, with child-resistant closure.

Rx Only
Product No.: 7622
Benadryl® is a registered trademark of Pfizer Inc.
Cogentin® is a registered trademark of Merck & Co., Inc.

Manufactured For:
Workhardt USA, LLC
Parsippany, NJ 07054

Manufactured By:
Morton Grove Pharmaceuticals, Inc.
Morton Grove, IL 60053

A50-7622-16
REV. 07-09

p8

p9

p10

p11

p12

p13

Metoclopramide Oral Solution, USP 5 mg/5 mL
Rx only

WARNING: TARDIVE DYSKINESIA
Treatment with metoclopramide can cause tardive dyskinesia, a serious movement disorder that is often irreversible. The risk of developing tardive dyskinesia increases with duration of treatment and total cumulative dose.

Metoclopramide therapy should be discontinued in patients who develop signs or symptoms of tardive dyskinesia. There is no known treatment for tardive dyskinesia. In some patients, symptoms may lessen or resolve after metoclopramide treatment is stopped.

Treatment with metoclopramide for longer than 12 weeks should be avoided in all but rare cases where therapeutic benefit is thought to outweigh the risk of developing tardive dyskinesia.

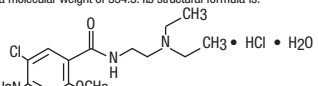
See **WARNINGS**

DESCRIPTION

Metoclopramide Oral Solution, USP is an orange-colored, palatable, aromatic, sugar-free liquid for oral administration.

Each 5 mL (teaspoonful) contains:
Metoclopramide, USP 5 mg
(present as the hydrochloride) less than 0.1%
Alcohol (contributed by flavorings)

Metoclopramide hydrochloride is a white or practically white, crystalline, odorless or practically odorless powder. Chemically, it is 4-Amino-5-chloro-N-[2-[(diethylamino)ethyl]-o-anisamide monohydrochloride hydrate. Its molecular formula is C₁₇H₂₂ClN₂O₂•HCl•H₂O, with a molecular weight of 354.3. Its structural formula is:



Inactive Ingredients: artificial butterscotch flavor, natural & artificial apple flavor, citric acid anhydrous, FD&C Yellow No. 6, glycerin, methyl-

paraben, propylene glycol, propylparaben, purified water and sorbitol solution. It may contain 10% citric acid solution or 10% sodium citrate solution for pH adjustment. The pH range is between 2.0 and 5.5.

CLINICAL PHARMACOLOGY

Metoclopramide stimulates motility of the upper gastrointestinal tract without stimulating gastric, biliary, or pancreatic secretions. Its mode of action is unclear. It seems to sensitize tissues to the action of acetylcholine. The effect of metoclopramide on motility is not dependent on intact vagal innervation, but it can be abolished by anticholinergic drugs.

Metoclopramide increases the tone and amplitude of gastric (especially antral) contractions, relaxes the pyloric sphincter and duodenal bulb, and increases peristalsis of the duodenum, and jejunum resulting in accelerated gastric emptying and intestinal transit. It increases the resting tone of the lower esophageal sphincter. It has little, if any, effect on the motility of the colon or gallbladder.

In patients with gastroesophageal reflux and low LES (lower esophageal sphincter pressure), single oral doses of metoclopramide produce dose-related increases in LES. Effects begin at about 5 mg and increase through 20 mg (the largest dose tested). The increase in LES from a 5 mg dose lasts about 45 minutes and that of 20 mg lasts between 2 and 3 hours. Increased rate of stomach emptying has been observed with single oral doses of 10 mg.

The antiemetic properties of metoclopramide appear to be a result of its antagonism of central and peripheral dopamine receptors. Dopamine produces nausea and vomiting by stimulation of the medullary chemoreceptor trigger zone (CTZ), and metoclopramide blocks stimulation of the CTZ by agents like L-dopa or apomorphine, which are known to increase dopamine levels or to possess dopamine-like effects. Metoclopramide also abolishes the slowing of gastric emptying caused by apomorphine.

Like the phenothiazines and related drugs, which are also dopamine antagonists, metoclopramide produces sedation and may produce extrapyramidal reactions, although these are comparatively rare (see **WARNINGS**). Metoclopramide inhibits the central and peripheral effects of apomorphine, induces release of prolactin and causes a transient increase in circulating aldosterone levels, which may be associated with transient fluid retention.

The onset of pharmacological action of metoclopramide is 1 to 3 minutes following an intravenous dose, 10 to 15 minutes following intramuscular administration, and 30 to 60 minutes following an oral dose; pharmacological effects persist for 1 to 2 hours.

Pharmacokinetics
Metoclopramide is rapidly and well absorbed. Relative to intravenous dose of 20 mg, the absolute oral bioavailability of metoclopramide is 80% ± 15.5% as demonstrated in a crossover study of 18 subjects. Peak plasma concentrations occur at about 1 to 2 hours after a single oral dose. Similar

time to peak is observed after individual doses at steady state.

In a single dose study of 12 subjects, the area under the drug concentration-time curve increases linearly with doses from 20 to 100 mg. Peak concentrations increase linearly with dose, time to peak concentrations remains the same, whole body clearance is unchanged, and the elimination rate remains the same. The average elimination half-life in individuals with normal renal function is 5 to 6 hours. Linear kinetic processes adequately describe the absorption and elimination of metoclopramide.

Approximately 85% of the radioactivity of an orally administered dose appears in the urine within 72 hours. Of the 85% eliminated in the urine, about half is present as free or conjugated metoclopramide.

The drug is not extensively bound to plasma proteins (about 30%). The whole body volume of distribution is high (about 3.5 L/kg) which suggests extensive distribution of drug to the tissues.

Renal impairment affects the clearance of metoclopramide. In a study with patients with varying degrees of renal impairment, a reduction in creatinine clearance was correlated with a reduction in plasma clearance, renal clearance, non-renal clearance, and increase in elimination half-life. The kinetics of metoclopramide in the presence of renal impairment remained linear however. The reduction in clearance as a result of renal impairment suggests that adjustment downward of maintenance dosage should be done to avoid drug accumulation.

Adult Pharmacokinetic Data	
Parameter	Value
Vd (L/kg)	~ 3.5
Plasma Protein Binding	~ 30%
t 1/2 (hr)	5 to 6
Oral Bioavailability	80% ± 15.5%

In pediatric patients, the pharmacodynamics of metoclopramide following oral and intravenous administration are highly variable and a concentration-effect relationship has not been established.

There are insufficient reliable data to conclude whether the pharmacokinetics of metoclopramide in adults and the pediatric population are similar. Although there are insufficient data to support the efficacy of metoclopramide in pediatric patients with symptomatic gastroesophageal reflux (GER) or cancer chemotherapy-related nausea and vomiting, its pharmacokinetics have been studied in these patient populations.

In an open-label study, six pediatric patients (age range, 3.5 weeks to 5.4 months) with GER received metoclopramide 0.15 mg/kg oral solution every 6 hours for 10 doses. The mean peak plasma concentration of metoclopramide after the tenth dose was 2-fold (56.8 mcg/L) higher compared to

that observed after the first dose (29 mcg/L) indicating drug accumulation with repeated dosing. After the tenth dose, the mean time to reach peak concentrations (2.2 hr) half-life (4.1 hr), clearance (0.7 L/h/kg), and volume of distribution (4.4 L/kg) of metoclopramide were similar to those observed after the first dose. In the youngest patient (age, 3.5 weeks), metoclopramide half-life after the first and the tenth dose (2.1 and 10.3 hr, respectively) was significantly longer compared to other infants due to reduced clearance. This may be attributed to immature hepatic and renal systems at birth.

Single intravenous doses of metoclopramide 0.22 to 0.46 mg/kg (mean, 0.35 mg/kg) were administered over 5 minutes to 9 pediatric cancer patients receiving chemotherapy (mean age, 11.7 years; range, 7 to 14 yr) for prophylaxis of cytotoxic-induced vomiting. The metoclopramide plasma concentrations extrapolated to time zero ranged from 65 to 395 mcg/L (mean, 152 mcg/L). The mean elimination half-life, clearance, and volume of distribution of metoclopramide were 4.4 hr (range, 1.7 to 8.3 hr), 0.56 L/h/kg (range, 0.12 to 1.20 L/h/kg), and 3 L/kg (range, 1 to 4.8 L/kg), respectively.

In another study, nine pediatric cancer patients (age range, 1 to 9 yr) received 4 to 5 intravenous infusions (over 30 minutes) of metoclopramide at a dose of 2 mg/kg to control emesis. After the last dose, the peak serum concentrations of metoclopramide ranged from 1060 to 5680 mcg/L. The mean elimination half-life, clearance, and volume of distribution of metoclopramide were 4.5 hr (range, 2 to 12.5 hr), 0.37 L/h/kg (range, 0.1 to 1.24 L/h/kg), and 1.93 L/kg (range, 0.95 to 3.5 L/kg), respectively.

INDICATIONS AND USAGE
The use of Metoclopramide Oral Solution is recommended for adults only. Therapy should not exceed 12 weeks in duration.

Symptomatic Gastroesophageal Reflux
Metoclopramide Oral Solution is indicated as short-term (4 to 12 weeks) therapy for adults with symptomatic, documented gastroesophageal reflux who fail to respond to conventional therapy.

The principal effect of metoclopramide is on symptoms of postprandial and daytime heartburn with less observed effect on nocturnal symptoms. If symptoms are confined to particular situations, such as following the evening meal, use of metoclopramide as single doses prior to the provocative situation should be considered, rather than using the drug throughout the day. Healing of esophageal ulcers and erosions has been endoscopically demonstrated at the end of 12-week trial using doses of 15 mg q.i.d. As there is no documented correlation between symptoms and healing of esophageal lesions, patients with documented lesions should be monitored endoscopically.

Diabetic Gastroparesis (diabetic gastric stasis)
Metoclopramide is indicated for the relief of symptoms associated with acute and recurrent diabetic gastric stasis. The usual manifestations of delayed gastric emptying (e.g., nausea, vomiting, heartburn, persistent fullness after meals and anorexia) appear to respond to metoclopramide within different time intervals. Significant relief of nausea occurs early and continues to improve over a three-week period. Relief of vomiting and anorexia may precede the relief of abdominal fullness by one week or more.

CONTRAINDICATIONS
Metoclopramide should not be used whenever stimulation of gastrointestinal motility might be dangerous, e.g., in the presence of gastrointestinal hemorrhage, mechanical obstruction, or perforation.

Metoclopramide is contraindicated in patients with pheochromocytoma because the drug may cause a hypertensive crisis, probably due to release of catecholamines from the tumor. Such hypertensive crises may be controlled by phentolamine.

Metoclopramide is contraindicated in patients with known sensitivity or intolerance to the drug.

Metoclopramide should not be used in epileptics or patients receiving other drugs, which are likely to cause extrapyramidal reactions, since the frequency and severity of seizures or extrapyramidal reactions may be increased.

WARNINGS
Mental depression has occurred in patients with and without prior history of depression. Symptoms have ranged from mild to severe and have included suicidal ideation and suicide. Metoclopramide should be given to patients with a prior history of depression only if the expected benefits outweigh the potential risks.

Extrapyramidal symptoms, manifested primarily as acute dystonic reactions, occur in approximately 1 in 500 patients treated with the usual adult dosages of 30 to 40 mg/day of metoclopramide. These usually are seen during the first 24 to 48 hours of treatment with metoclopramide, occur more frequently in pediatric patients and adult patients less than 30 years of age and are even more frequent at the higher doses. These symptoms may include involuntary movements of limbs and facial grimacing, torticollis, oculogyric crisis, rhythmic protrusion of tongue, bulbar type of speech, trismus, or dystonic reactions resembling tetanus. Rarely, dystonic reactions may present as stridor and dyspnea, possibly due to laryngospasm. If these symptoms should occur, inject 50 mg Benadryl® (diphenhydramine hydrochloride) intramuscularly, and they usually will subside. Cogentin® (benztropine mesylate), 1 to 2 mg intramuscularly, may also be used to reverse these reactions.

Parkinsonian-like symptoms have occurred, more commonly within the first 6 months after beginning treatment with metoclopramide, but occasionally after longer periods. These symptoms generally subside within 2 to 3 months following discontinuance of metoclopramide. Patients with pre-existing Parkinson's disease should be given metoclopramide cautiously, if at all, since such patients may experience exacerbation of parkinsonian symptoms when taking metoclopramide.

Tardive Dyskinesia (see Boxed Warnings)
Treatment with metoclopramide can cause tardive dyskinesia (TD), a potentially irreversible and disfiguring disorder characterized by involuntary movements of the face, tongue, or extremities. Although the risk of TD with metoclopramide has not been extensively studied, one published study reported a TD prevalence of 20% among patients treated for at least 12 weeks. Treatment with metoclopramide for longer than 12 weeks should be avoided in all but rare cases where therapeutic benefit is thought to outweigh the risk of developing TD.

Although the risk of developing TD in the general population may be increased among the elderly, women, and diabetics, it is not possible to predict which patients will develop metoclopramide-induced TD. Both the risk of developing TD and the likelihood that TD will become irreversible increase with duration of treatment and total cumulative dose.

Metoclopramide should be discontinued in patients who develop signs or symptoms of TD. There is no known effective treatment for established cases of TD, although in some patients, TD may remit, partially or completely, within several weeks to months after metoclopramide is withdrawn.

Metoclopramide itself may suppress, or partially suppress, the signs of TD, thereby masking the underlying disease process. The effect of this symptomatic suppression upon the long-term course of TD is unknown. Therefore, metoclopramide should not be used for the symptomatic control of TD.

Neuroleptic Malignant Syndrome
There have been rare reports of an uncommon but potentially fatal symptom complex sometimes referred to as Neuroleptic Malignant Syndrome (NMS) associated with metoclopramide. Clinical manifestations of NMS include hyperthermia, muscle rigidity, altered consciousness, and evidence of autonomic instability (irregular pulse or blood pressure, tachycardia, diaphoresis and cardiac arrhythmias).

The diagnostic evaluation of patients with this syndrome is complicated. In arriving at a diagnosis, it is important to identify cases where the clinical presentation includes both serious medical illness (e.g., pneumonia, systemic infection, etc.) and untreated or inadequately treated extrapyramidal signs and symptoms (EPS). Other important considerations in the differential diagnosis include central anticholinergic toxicity, heat stroke,

malignant hyperthermia, drug fever